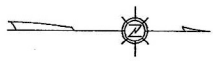
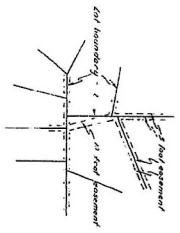
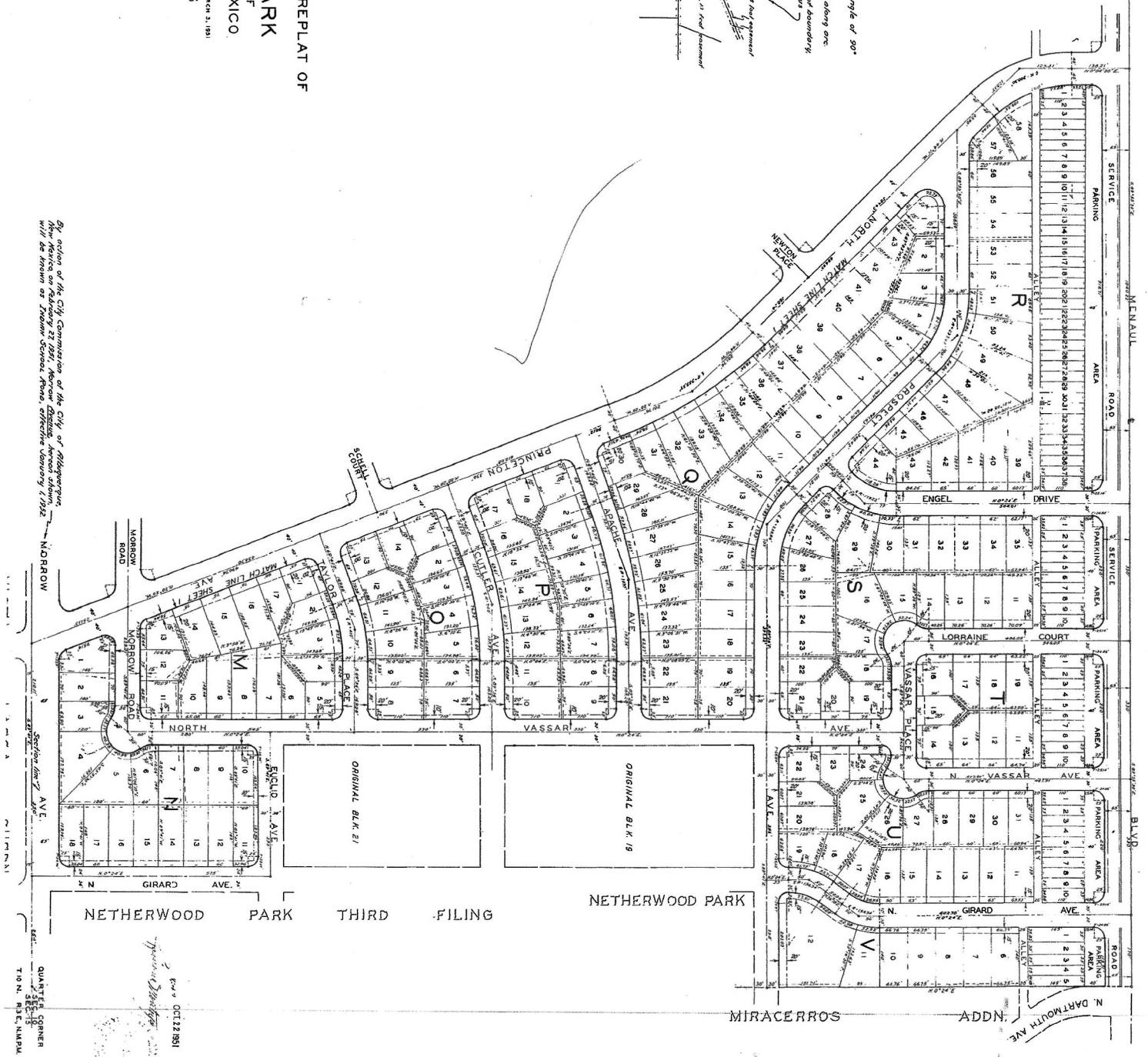


Notes - Distances shown for boundary lines form on angle of 90° with street right of way lines.
All dimensions shown on curved lines are measured along arc.
10 foot utility easements (measured 5 feet each side of boundary where carried along lot boundary lines) are shown thus



NETHERWOOD CORPORATION'S REPLAT OF
A PORTION OF
NETHERWOOD PARK
AN ADDITION TO THE CITY OF
ALBUQUERQUE - NEW MEXICO
ROSS-BETTER ENGINEERING OFFICE - 941-JUN-WET-CBS MARCH 5, 1951
SCALE: 1 IN. = 100 FT.
SHEET 2 OF 2 SHEETS



By action of the City Commission of the City of Albuquerque, New Mexico on February 23, 1951, Netherwood Addition, known shown, will be known as Netherwood School Road, effective January 1, 1952.

QUARTER CORNER
SECTION 15
T10 N. R10 E. N.M.P.M.
OCT 12 1951